

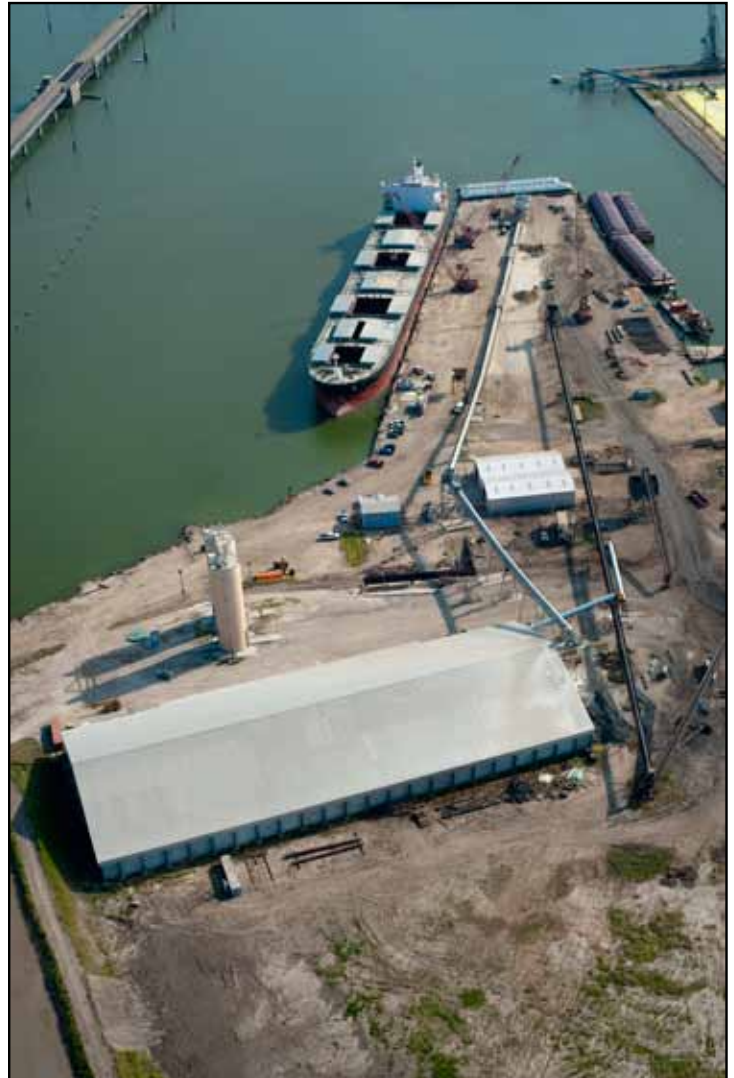
TEXAS INTERNATIONAL TERMINALS MAINTENANCE BUILDING/TERMINAL OFFICE (JUNE 2010)

Sullivan Land Services was hired by Texas International Terminals to design and construct a 10,000 sq. ft. maintenance building containing underground maintenance bays, high pressure air systems and lighting systems.

The building was required to be elevated to minimize potential flood damage. In addition, the terminal office building was constructed adjacent to the maintenance building to house administrative personnel as well as on-site personnel storage and dining facilities. The building was intended to appear as a building similar in appearance to the historic district on Galveston Island.

PROJECT SUMMARY

- 10,000 sq. ft. maintenance building with underground maintenance bays, high pressure air systems and lighting systems. Office building contains 5,000 sq. ft. of office space as well as employee storage/changing and dining facilities
- Design, engineering and construction in 2 months



The above are highlights of recent projects. A more comprehensive list of company projects is available upon request. References for the aforementioned projects, as well as general company, financial, insurance and bonding references are also available upon request.

